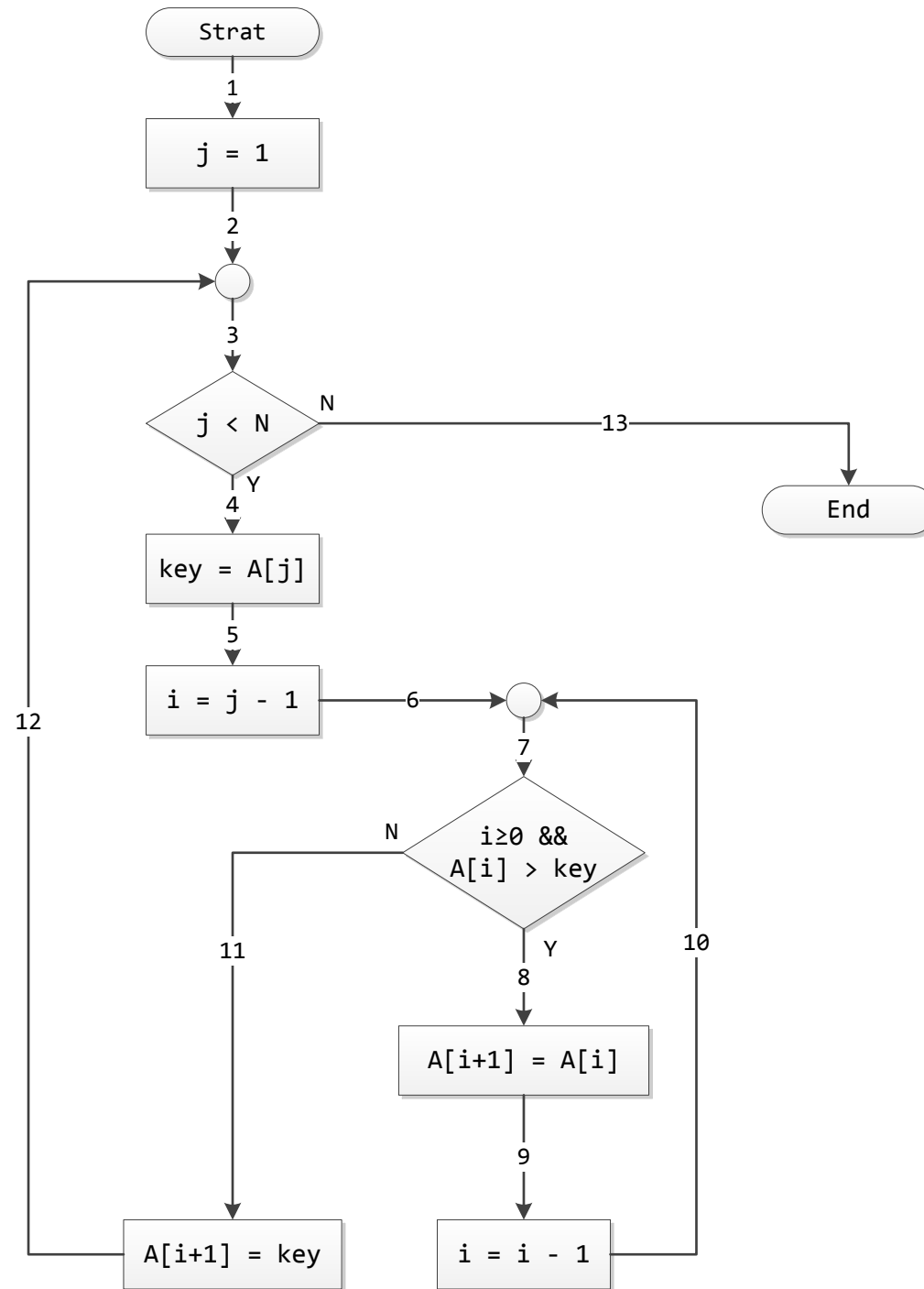


1.Insertion Sort

Templates Used

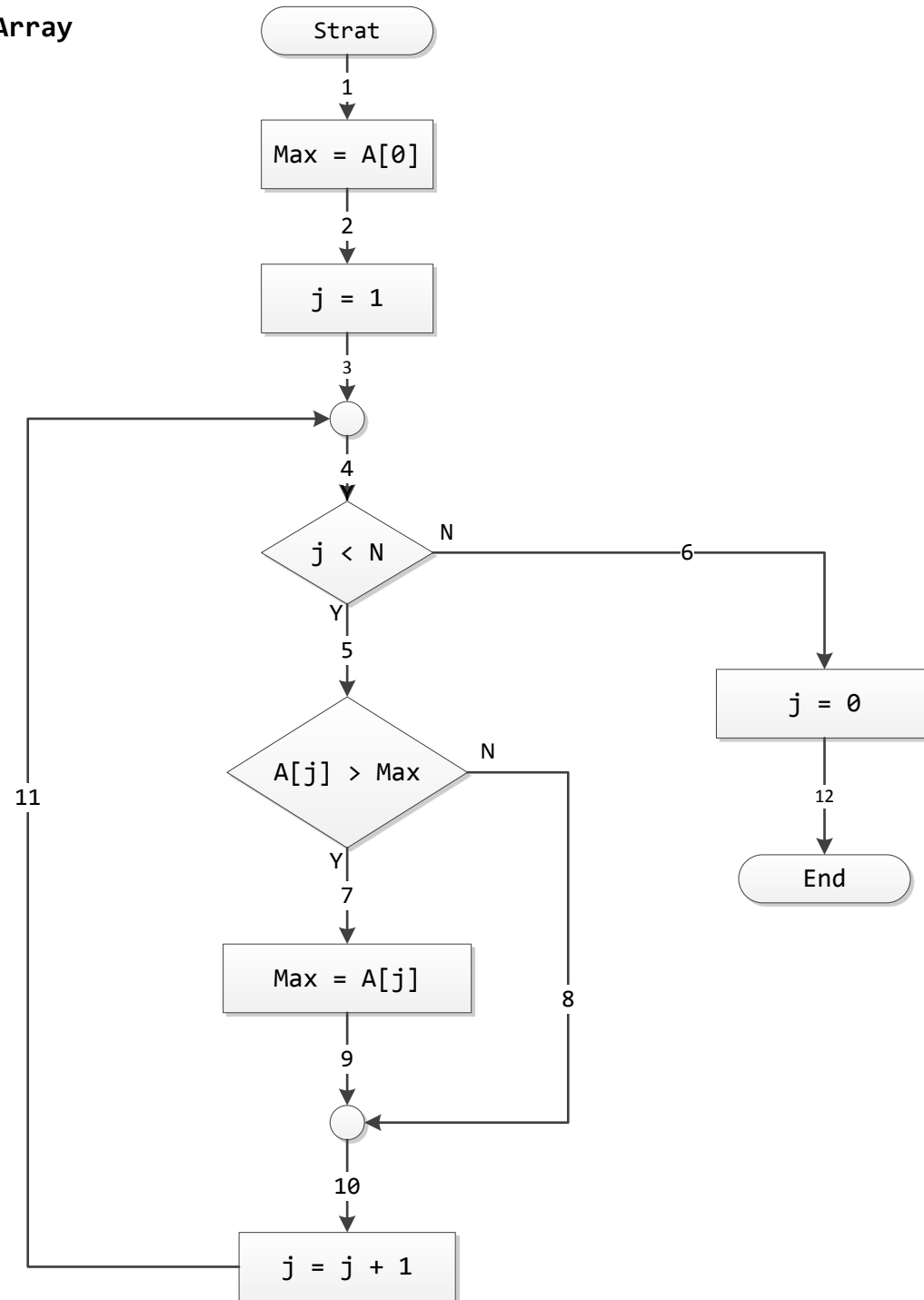
- $A[\alpha] \leq \text{key}$
- $\text{key} \leq A[\alpha]$
- $A[\alpha] \leq A[\alpha+1]$



2. Finding Maximum element from an Array

Templates Used

- $A[\alpha] \leq \text{Max}$
- $A[\alpha] = \text{Max}$



3. Initializing an Array

Templates Used

- $A[\alpha] = c$

